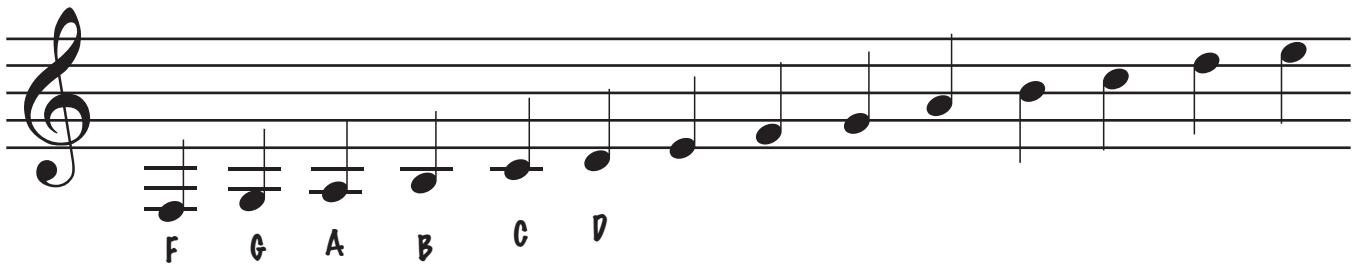
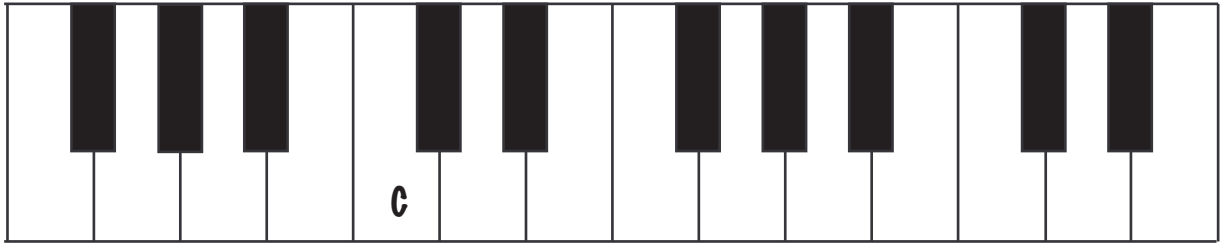


let's find more notes

on the music staff, every line & every space gets its own letter.

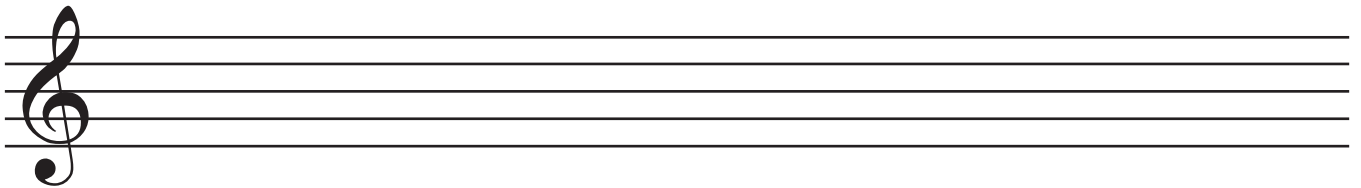
here's the keyboard again. can you connect the keys with their notes on the staff?



when the notes go below the staff, we add on extra little lines.
i've written in the first few notes, can you write in the rest?

now you can write a melody using any of these notes.

remember, you can use both quarter notes & half notes!



if you use words, it's a song.
try writing some words & a melody that goes with them.

